



## ReTreat 4 Leaders

Bespoke **immersive experience** designed  
by Creative X Factory with **Francesca  
Mastrogiaconi** as **facilitator** and **coach**



# Catch a Sunday Train to Marche

Travel from Milano Centrale, work and chat with your team for 3 hrs



# Enjoy the Magic

*Relax at the Castle*



# Change Perspectives

*Get inspired by me time. Walk and talk with your team members and get individual coaching sessions*



# Lead Complexity

*Co-build a vision for your team and manage organizational landscapes with LEGO® SERIOUS PLAY®*



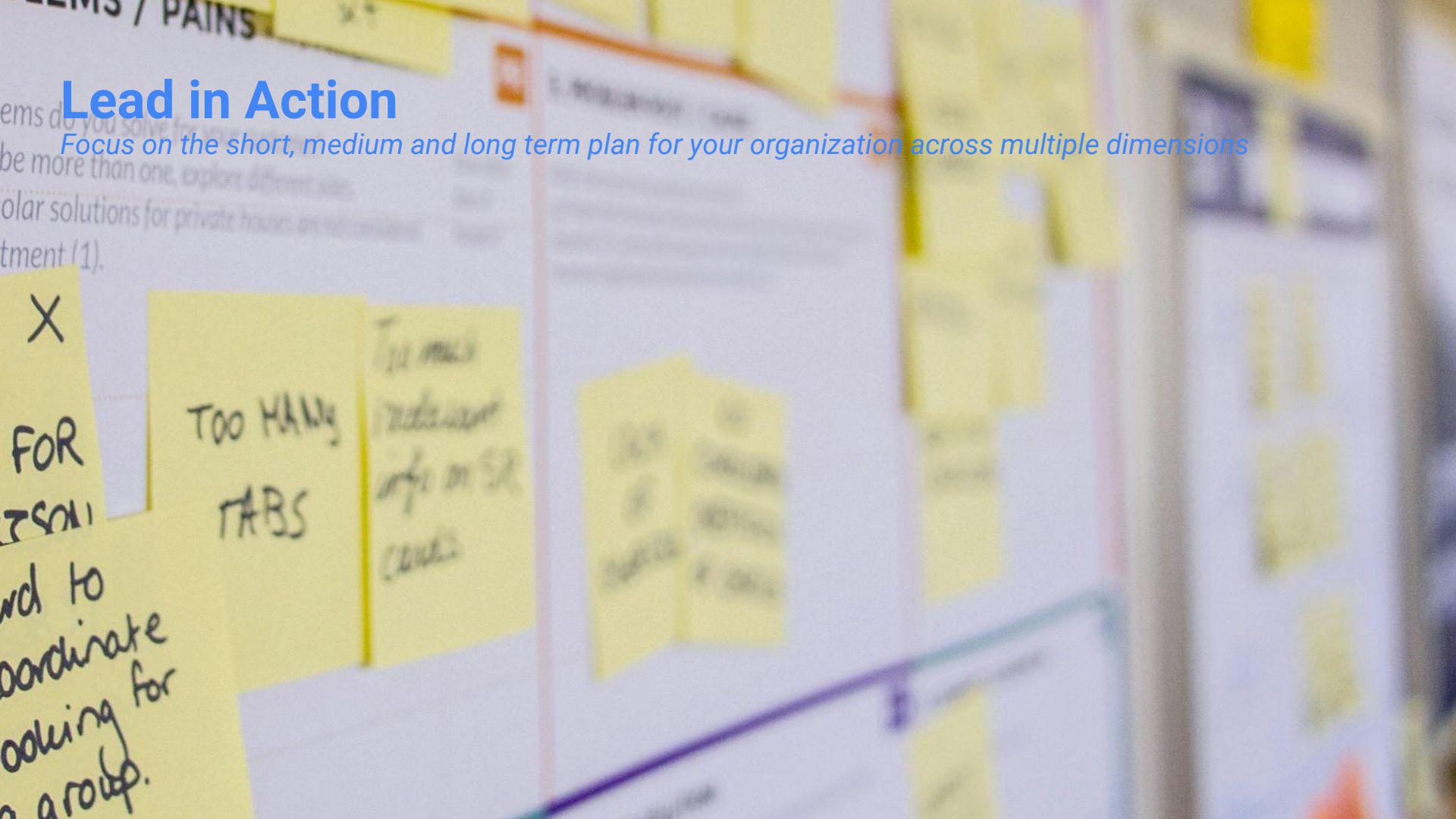
# Lead Sustainably

*Explore sustainable leadership models while enjoying local products*



# Lead in Action

Focus on the short, medium and long term plan for your organization across multiple dimensions



Sunday	Monday	Tuesday
	07:00 - 8:00 <i>Breakfast</i>	07:00 - 8:00 <i>Breakfast</i>
	8:00 - 09:30 <b>Golf</b> - <i>for beginners</i>	8:30 - 9:00 Guided <b>Meditation</b>
	09:30 - 13:00 <b>Lead Complexity</b> - Co-build a <i>Vision</i> for the Team with LEGO® SERIOUS PLAY® <i>*coffee breaks included</i>	9:00 - 12:00 <b>Lead in Action</b> - Now Next Long Action Plan for Tech, Org, Processes, and People <i>*coffee breaks included</i>
	13:00 - 13:45 <i>Buffet Lunch</i>	12:00 - 12:30 <b>Admin</b> - Check-out
		12:30 - 13:30 <i>Buffet Lunch</i>
<b>Travel To Together</b> by Train Freccia Rossa 3 hrs Trip Choice Milano Centrale - Pesaro <b>14:35 - 17:05</b> / 16:30 - 19:08 / 17:30 - 20:00	14:00 - 15:00 <b>Lead Complexity</b> - Explore Organizational Landscapes to Manage Complexity with LEGO® <i>*coffee breaks included</i> 15:00 - 16:30 <b>Lead in Action</b> - Start Stop Continue <i>Retrospective</i>	14:00 - 14:20 <b>Transport</b> to Pesaro Station <i>*van transit included</i>
<b>Group Pick Up</b> at Pesaro Station, <b>Check-in</b> , and <b>Relax Time</b> at <a href="#">The Castle</a> or 2 km <b>Nordic Walk</b> from the <a href="#">Eremo</a> open until 18:00 (187 mt down steep and 2 km backwards) <i>* van transit included, superior/deluxe room</i>	16:30 - 17:00 Me Time or <b>Coaching</b>  17:00 - 19:00 <b>Lead Sustainably</b> - <i>Tasting Experience</i> at <a href="#">Crespaia</a> Vineyards - <i>led by the owner</i> <i>*van transit included, local food and wines</i>	<b>Travel Back Together</b> by Train Freccia Rossa 3 hrs Trip Choice Pesaro - Milano Centrale 13:54 - 16:59 / <b>14:52 - 17:54</b> / 15:54 - 18:55
20:30 Welcome <b>Dinner</b> at <a href="#">The Castle</a> <i>** drinks included 4 courses meal</i>	19:30 - <b>Chill Out</b> at <a href="#">The Castle</a> <i>**excluding extra and drinks</i>	<ul style="list-style-type: none"> <li>- <b>green</b>: led by Francesca</li> <li>- <b>purple</b>: co-facilitated with 3rd parties</li> <li>- <b>red</b>: excluded, participants settle directly</li> </ul>

# Get Back into Business Energized and with a Shared Plan

*Plan the follow up sessions with your team to boost the effectiveness in the long run on the way back to town*





## Limited to MIN #4 MAX #6

Reach out to Creative X Factory

Francesca Mastrogiaconi, PhD

[creativexfactory@gmail.com](mailto:creativexfactory@gmail.com)

Mobile +39 **335 528 2387**

